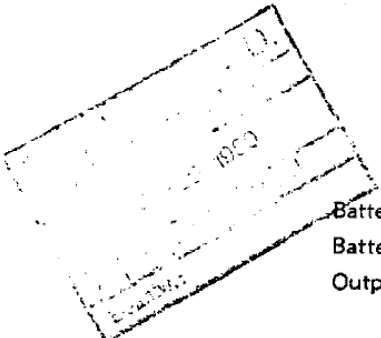


PHILIPS VIBRATOR UNIT MODEL 118

SPECIFICATIONS

(Subject to alteration without notice)

Battery Equipment	6 Volt Accumulator
Battery Consumption	0.75A.
Output	90V. at 15 mAs
	1.3V. at 280 mAs



APPLICATION.

The Model 118 Vibrator unit is intended for use with the Model 117 Radioplayer. Do not attempt to power any other receiver from it.

REMOVAL OF UNIT FROM CASE.

Remove the unit from the chassis by a reversal of the installation operations.

The top and bottom covers and the case itself can be removed from about the unit by removal of appropriate screws.

PRECAUTION.

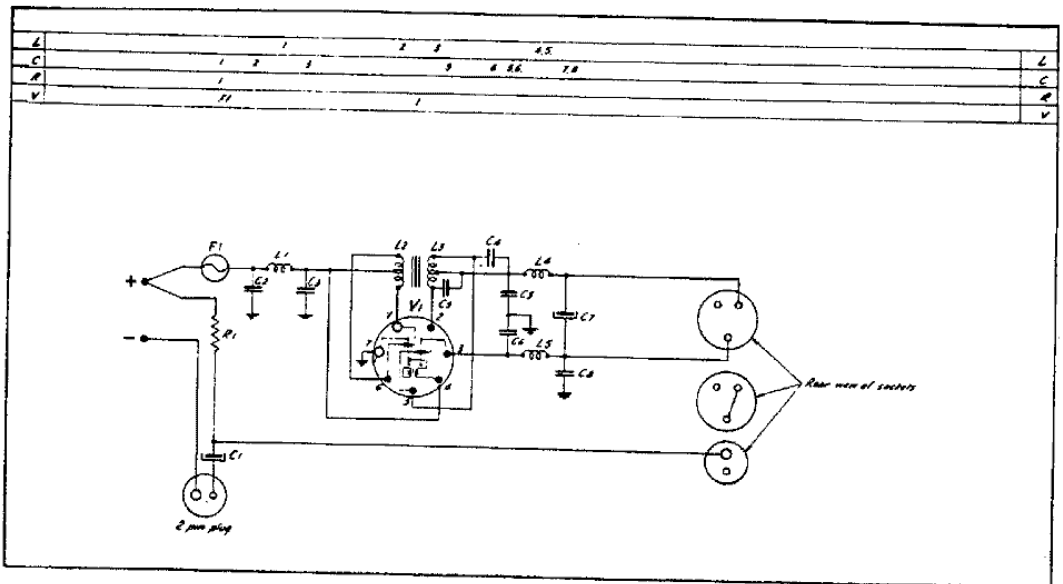
If, for the purposes of checking or making adjustments, it is necessary to operate the unit in a position other than its normal receiver chassis location, it is essential that a wire be connected between the receiver and unit chasses.

INSTALLATION.

Model 118 is designed to be mounted on to the chassis of Model 117.

After removing the cabinet back of the Model 117, place the 118 unit on the 117 chassis in the space provided so that the stud on its underside engages in the hole and slot in the 117 chassis. Push the 118 unit forward and secure it by means of the two screws provided.

Insert the two-pin plug on the short lead of the 118 unit into the vibrator socket of the Model 117. Connect the normal battery leads of the Model 117 to the outlets provided on the 118 unit, stow the surplus cable in the cabinet between the 118 unit and the side of the cabinet and re-install the cabinet back.



PARTS LISTS

CAPACITORS

No.	Description
C1	500 mF 12V electrolytic
C2-3	0.5 mF 200V paper
C4-9	0.02 mF 600V paper
C5	0.01 mF 600V paper
C6-8	0.1 mF 200V paper
C7	24 mF 350V electrolytic

RESISTORS

No.	Description	Code No.
R1	16 ohms 3W W/W $\pm 2\%$	CZ.008.513

COILS

No.	Ohms	Description	Code No.
L1	<.5	L.T. R.F. Choke	CZ.321.213
L2	1	} Power Transformer	CZ.344.024
L3	660		
L4	66	H.T. R.F. Choke	CZ.321.220
L5	66	H.T. R.F. Choke	CZ.321.220

MISCELLANEOUS COMPONENTS

Description	Code No.	Description	Code No.
Cartridge, vibrator	CZ.183.101	Socket, 2 pin polarized	CR.102.401
Clip, battery, positive	CH.777.010	Socket, 3 pin, comprising—	CS.102.600
Clip, battery, negative	CH.777.011		
Fuse, 2A auto. type	CZ.280.900	Panel, insul. (1 per socket)	CS.110.624
Grommet, battery leads	CS.422.441	Panel, contact mtg. (1 per socket)	CS.110.623
Holder, fuse	CZ.371.100	Socket, 7 pin	CZ.369.313
Plug, 2 pin polarized	CR.102.200		

IMPORTANT! In ordering spare parts, please quote CODE NUMBER of part and MODEL NUMBER of unit. In claiming free replacement under GUARANTEE, return defective parts PROMPTLY and quote MODEL and SERIAL NUMBER of unit and DATE OF PURCHASE.

